

# EDvance College is a newly-accredited remote college built for today's early childhood education workforce

**Our vision** is a world in which higher education facilitates the development of agency and full potential in individuals and communities.

**Our mission** is to create an ecosystem of equity-driven teachers, leaders, and change agents working to transform the future of our children and communities.





## Our students

- Multilingual
- Women of color
- First in their family to go to college
- Employed full time in a State-funded, Head Start or licensed Family Child Care Setting.



# The EDvance Model

Built for today's early childhood educator workforce



## Accessible Transfer Requirements

Simplified transfer criteria accelerates transfer-readiness



## Affordable Degree Program

Guaranteed courses and aid with goal of debt-free education



## Work and Attend School Full-Time

Full-time work in ECE classroom counts towards degree credits



## Dynamic Remote Curriculum

Cohorted courses are at convenient times for working students



## Comprehensive Student Support

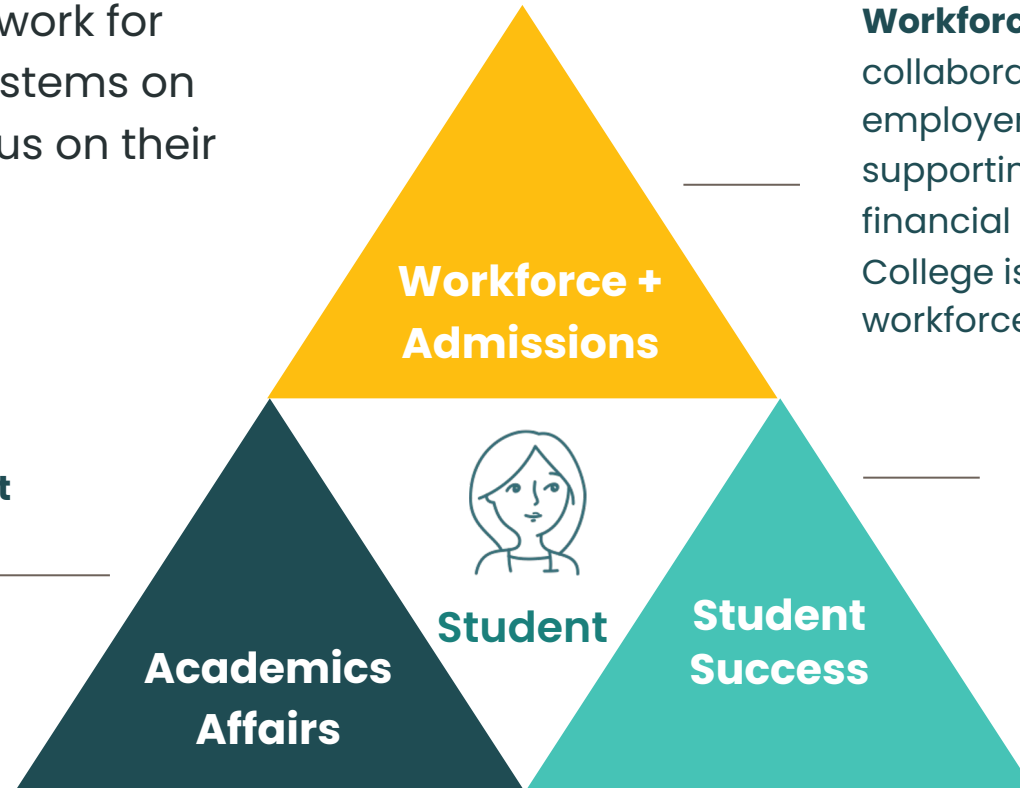
360 support for educators and dual language learners



# Student Success Model

We make higher education work for students by coordinating systems on their behalf, so they can focus on their education.

**Academic Affairs department** facilitates learning through a dynamic remote module, where students apply coursework content into classroom practice



**Workforce and Admissions department** collaborates to coordinate services with employer partners on behalf of students, supporting with outreach and recruitment, financial aid and ensuring EDvance College is meeting the needs of the workforce.

**Student Success department** coordinates services on behalf of the student, make appointments for students, ensure paperwork is completed and report out on themes of student needs and successes.

**Engage in on-boarding training and regular student success meetings**

# Institutional Learning Outcomes



## **Critical thinkers**

EDvance graduates are strong critical thinkers and are able to apply critical thinking skills to effectively locate, select, appraise, and use information.



## **Effective communicators**

EDvance graduates are effective communicators using written, verbal, and visual formats.



## **Change agents**

EDvance graduates are reflective professionals, collaborators, leaders, and agents of change, committed to equity, diversity, and social justice.



## **Research driven**

EDvance graduates feel confident and competent using quantitative reasoning and scientific inquiry.



# Program Learning Outcomes



role of policy, advocacy,  
and organizing in early  
childhood education



observing, assessing,  
documenting, and  
interpreting children's  
development



early childhood education  
field and profession



subject-specific  
pedagogy and  
developmental processes  
of domain learning



relationships with families,  
children, colleagues, and  
the community



learning opportunities for  
children and families;  
focus on language  
learning and inclusion



theoretically-underpinned  
interventions and  
curriculum



culture of reflective  
practice



# The BA in Early Childhood Studies At a Glance

## Sample Semester:

### Semester Theme

Content Course • 3 units

Content Course • 3 units

Writing Development • 3 units

Community Reflective Practice • 3 units

ECE Work Credit • 3 units

- Each semester, students enroll in **15 units**, including 3 units for paid ECE work
- All courses are **contextualized** around one theme for each semester
- Curriculum is mapped to **California permit levels and TPEs**
- Enrollment in **courses guaranteed** and classes take place in the evenings
- All courses are **synchronous** with significant asynchronous learning



# Accessible Entry Levels for All Students

Have **12 units** ECE/CD including core courses or the Child Development Associate CDA (R)



Have **30-60 units**  
**GE Pathway Entry**



Have **60 or more units** and meet EDvance transfer requirements



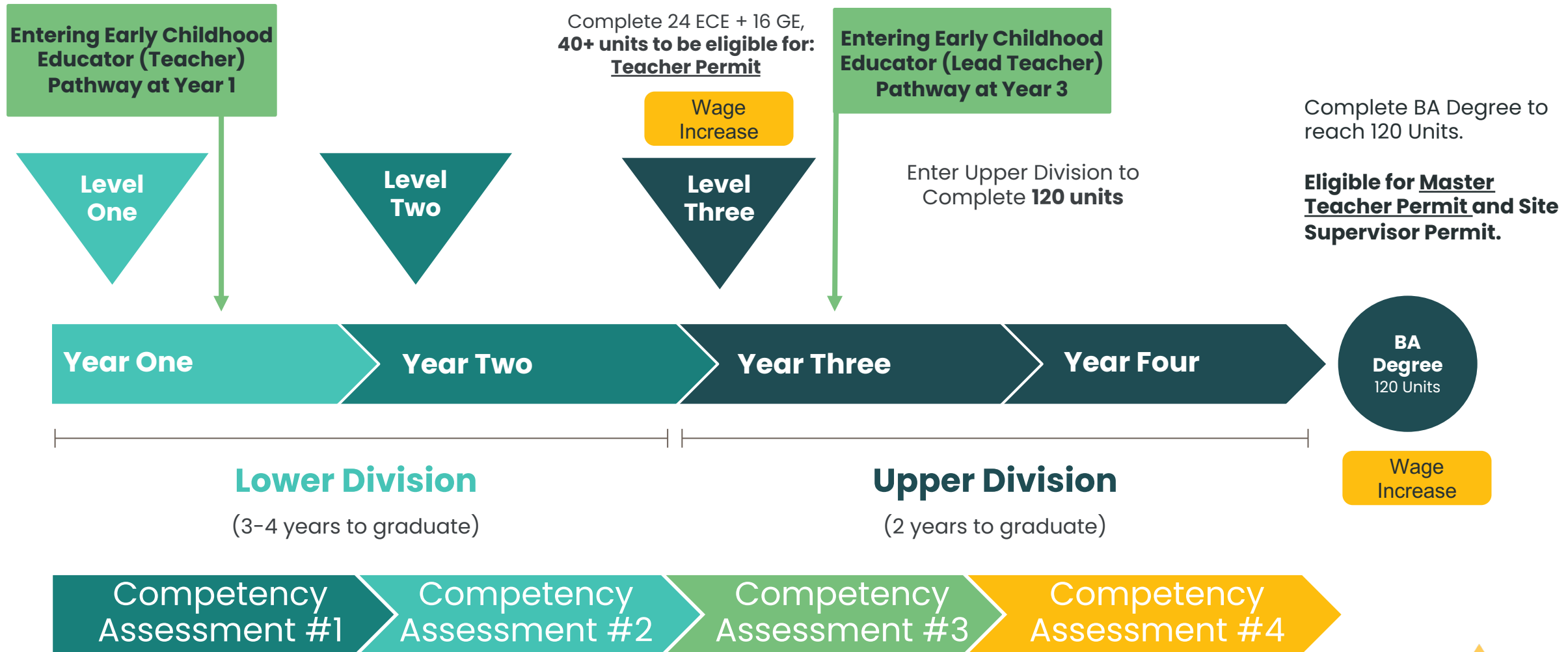
EDvance works with all prospective students to evaluate their academic transcripts and place them at an appropriate entry level based on their prior learning.



**Lower Division**  
(3-4 years to graduate)

**Upper Division**  
(2 years to graduate)

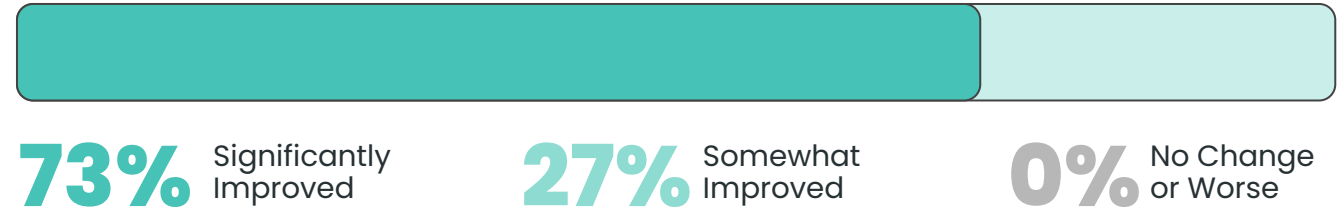
# Pathway and Permit Levels for Apprentices



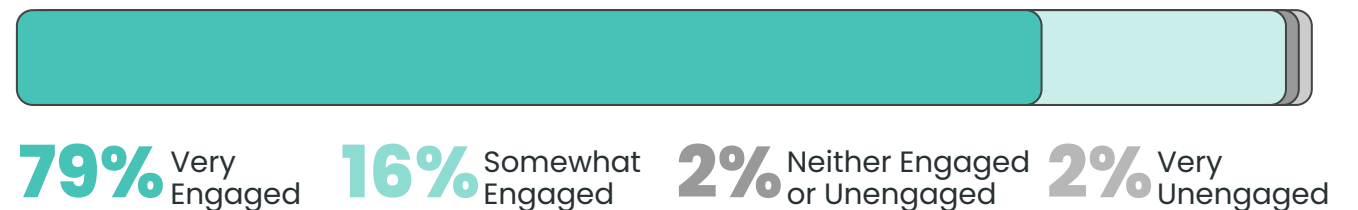
# Student Experience Data

When asked **OVERALL**, how would you rate:

The **IMPROVEMENT IN YOUR ECE TEACHING SKILLS** as a result of the program?



Your **ENGAGEMENT** as a student at EDvance College?



# EXPANSION TO ALAMEDA COUNTY

**Currently Serving Oakland: 12**

**Alameda County: 28**

- 1. Commitment to Affordability and Accessibility:** EDvance College is deeply committed to providing affordable and accessible degree programs that meet the needs of early childhood educators.
- 2. Institutional Grants in Progress:** We are actively collaborating with a range of local, state, and national funders to secure institutional grants specifically for Alameda County. These grants are crucial as we await approval to offer federal financial aid.
- 3. Timeline for Grant Availability:** We anticipate having more detailed information about the number of institutional grants available for Alameda County ECE professionals in the coming months.

# At-a-Glance Value we Bring

**4. Tuition and Value Proposition:** Our tuition is set at \$6,000 per semester. While this is slightly higher than the cost of attending a California State University (CSU), EDvance College offers significant added value:

- **Guaranteed Class Availability**
- **Credit for Work Experience**
- **Small Class Sizes**
- **Embedded Student Support**
- **High Satisfaction and Timely Graduation**
- **Alignment with Employers**
- **Employer Partner Pathway Collaborations**

**94%  
Retention  
Rate**

**Serving  
200+  
Students**

**16+  
Partner  
Agencies**





# EDvance College Partnerships Team

**Alicia Osborne,**  
**VP of Workforce Development and Admissions**  
[alicia.o@edvance.edu](mailto:alicia.o@edvance.edu)

**Anna Wolde-Yohannes,**  
**Partnerships Manager**  
[anna.y@edvance.edu](mailto:anna.y@edvance.edu)